

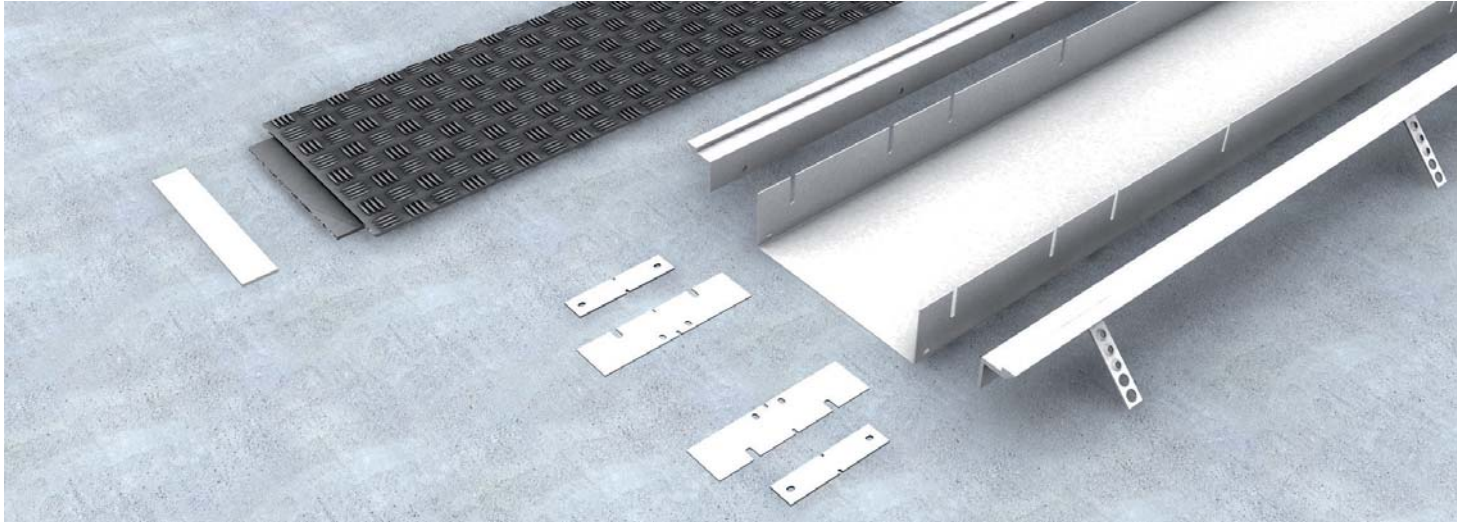


## **Screed flush heavy-duty duct** Assembly instruction



# Screed flush heavy-duty duct

## Assembly instruction

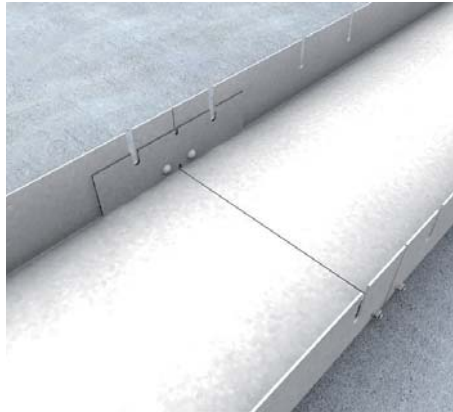


The screed-flush heavy duty duct consist of a heavy duty duct bottom piece UBK, three heavy duty dummy covers UBKD, two side profiles UBKPR, and of mounting and connecting material. These parts are contained in the shipment as individual parts. The duct can be installed in the widths of 200, 300 and 400 mm with a levelling height of 100 to 200 mm and can bear loads of 5 to 25 kN.



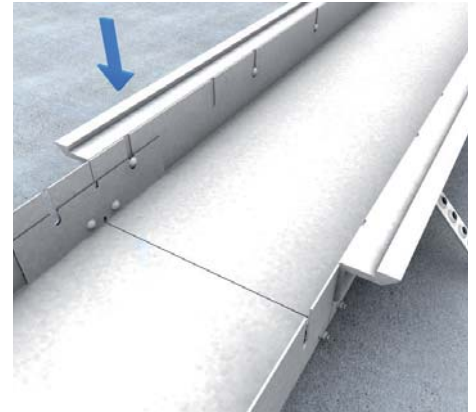
### 1 | Duct alignment

Measure the duct course according to the approved layout drawing and mark it using a plumb line. Lay duct bottom piece UBK according to duct course and marking and align in dead centre.



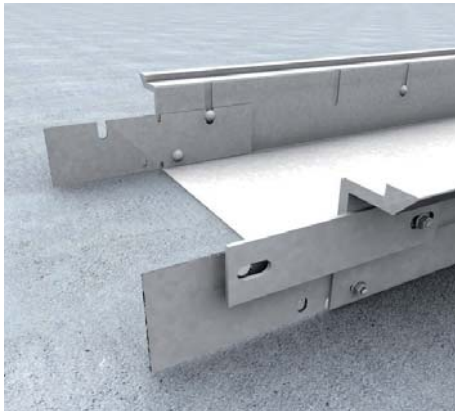
### 2 | Inside couplers

Push duct bottom pieces together and screw together using inside couplers UBKV.



### 3 | Side profile

Insert side profile UBKPR into the trenches of the duct bottom piece from the outside using pre-assembled screws.



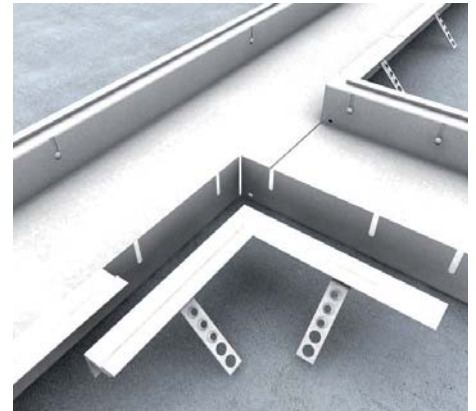
### 4 | Coupler

Bolt duct bottom piece, side profile, and inside couplers together at the joints using couplers UBKPRV.



### 5 | Fixing

Mount duct to the rough concrete in two places per length using plugs.

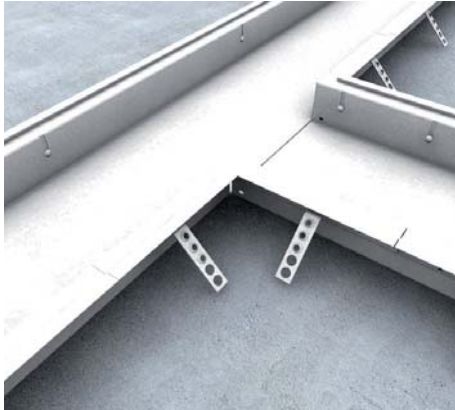


### 6 | Inward profile bend

In order to create a branch, notch the duct bottom piece as well as the side profile. Then insert two inward profile bends UBKIB.

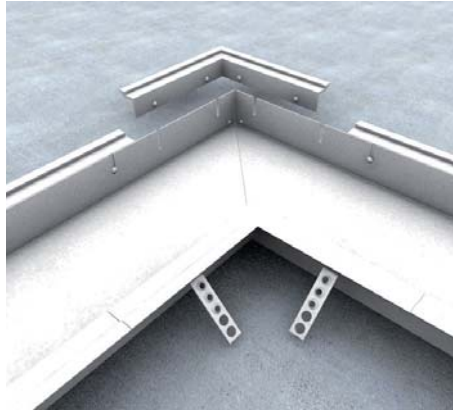
# Screed flush heavy-duty duct

## Assembly instruction



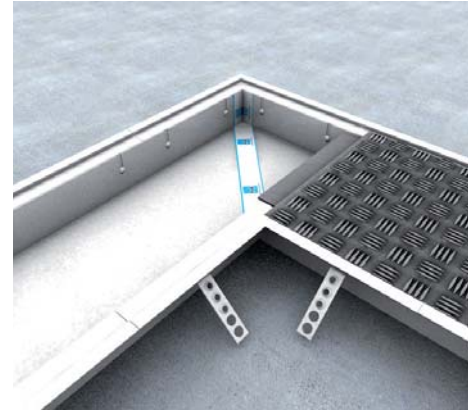
### 7 | Shortening a T-junction

Push the branch duct bottom piece to the notch, shorten the side profile by 0,3 m and hinge it behind the inward bend.



### 8 | Outward profile bend

Cut duct bottom pieces to length and mitre. Then hinge profile inward and outward bends (UBKAB). The outside curve is to be mounted on site using connectors UBKPRVE.



### 9 | T-junction final assembly

Push the branch duct bottom piece to the notch and cut the dummy cover UBKD as well as the profile.



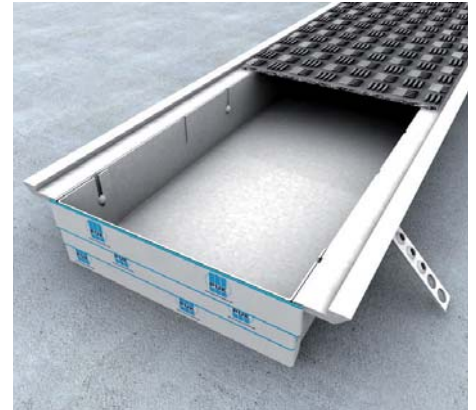
### 10 | End piece

Hinge end piece UBKEB into duct bottom piece and align.



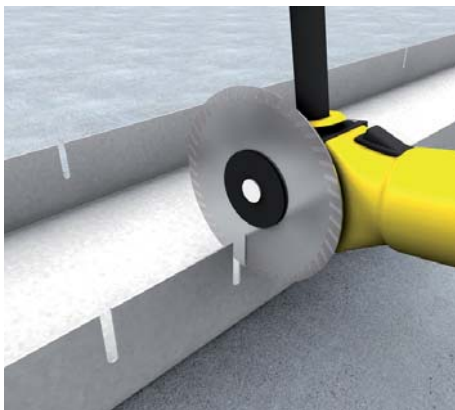
### 11 | Spacer

Before applying screed, insert one spacer UBKDB per duct metre. The distance plate is to be removed after the hardening of screed.



### 12 | Dummy cover

Mask all open areas and insert dummy covers only after the application of screed.



### 13 | Slotting

If needed, add slots to the duct bottom piece, then burr and galvanise the joints.



### 14 | Adjust levelling

Level duct system to the required screed height using a laser or digital tube level.



### 15 | Levelling

Height levelling over 35 mm is possible due to the side slot in the duct bottom piece.



Errors and technical modification subject to change, reproduction as well as electronic duplication only with our written permission. With appearance of this print all preceding documents lose their validity.

