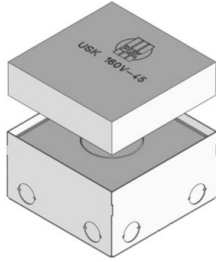


UKE160 VP WD

stainless steel tube cover compact single-outlet, quadruple, angular



Consisting of floor box inclusive square single outlet in sheet steel and shuttering formwork, as concealed shuttering for direct installation in floor screed. As height-adjustable cassette installation frame with heavy-duty tube outlet cassette in flat stainless steel, welt, screwed tube assembly set and rubber seal to accommodate up to four 45x45mm installed devices. With perforations on the side panels for the introduction of tubes M25. Suitable for rooms with wet-cleaned floor covers. Designed for high traffic loads.



norm	according to DIN EN 50085
permits	according to VDE / TÜV

Stainless steel, according to ASTM 304 / BS 304 S 3

Product	H	H _{min}	N	B	L	E	P _{max}	IP _n	IP _g	G
UKE160 15-VP-WD	15 mm	90 mm	35 mm	160 mm	160 mm	166 x 166 mm	20 kN	IP 54	IP 22	4,04 kg

H: height

H_{min}: Minimum installation height

N: levelling range

B: width

L: length

E: fitting dimension

P_{max}: Maximum load

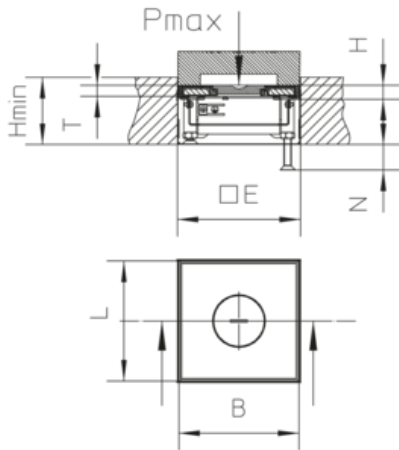
IP_n: IP protection level in unused condition

IP_g: IP protection level in used condition

G: weight

DETAILS / APPLICATIONS





OPTIONAL ACCESSORIES

UEP160 UST, UEP160 UST-TR, UET WD, UKENP 160



wet-cleaned

