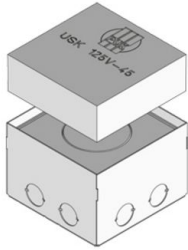


## UKE125 VP WD

stainless steel tube cover compact single-outlet, double, angular



Consisting of floor box inclusive square single outlet and shuttering formwork, as concealed shuttering for direct installation in floor screed. As height-adjustable cassette installation frame with heavy-duty tube outlet cassette in flat stainless steel, welt, screwed tube assembly set and rubber seal to accommodate up to two 45x45mm installed devices and two single data jacks. With perforations on the side panels for the introduction of tubes M25. Suitable for rooms with wet-cleaned floor covers. Designed for high traffic loads.



norm	according to DIN EN 50085
permits	according to VDE / TÜV

### Stainless steel, according to ASTM 304 / BS 304 S 3

Product	H	H <sub>min</sub>	N	B	L	E	P <sub>max</sub>	IP <sub>n</sub>	IP <sub>g</sub>	G
UKE125 15-VP-WD	15 mm	90 mm	35 mm	125 mm	125 mm	131 x 131 mm	20 kN	IP 54	IP 22	2,60 kg

**H:** height

**H<sub>min</sub>:** Minimum installation height

**N:** levelling range

**B:** width

**L:** length

**E:** fitting dimension

**P<sub>max</sub>:** Maximum load

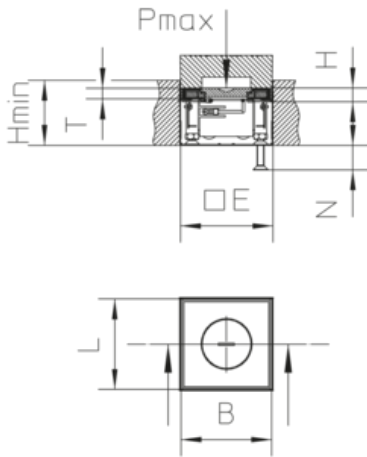
**IP<sub>n</sub>:** IP protection level in unused condition

**IP<sub>g</sub>:** IP protection level in used condition

**G:** weight

## DETAILS / APPLICATIONS





## OPTIONAL ACCESSORIES

UEP125 KS, UEP125 UST, UET WD, UEP125 B, UKENP 125



wet-cleaned

