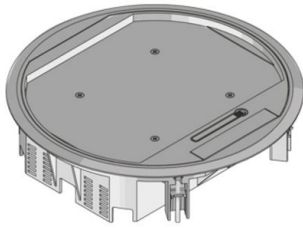


## UEKD2 R

hinged cover unit made of polyamide, double, round



Round installation unit made of polyamide with carpet protection frame. As an installation frame with lock-in leads for a gradual lowering of up to 2 mounting boxes (6 coupler clip installation devices or 8 installation devices of 45x45mm) by up to 30 mm, self-locking hinged cover with steel sheet inlay, floor flush 180° pivoting cable outlet and a self-closing opening lever, including an all-purpose mounting claw set. For the installation into floor boxes, assembly covers and into raised or hollow floor openings. Suitable for rooms with dry-cleaned floor covers of up to 8mm. Designed for office traffic loads.

Please mind the technical information in chapter planning.



material	Cover and frame: PA6, surface matt finished, steel sheet inlay: 3 mm hot-dip galvanized steel plate
type of assembly	Assembly in floor box UBDHB, double or hollow floor openings
application area	dry floor cleaning
protection class	in use IP 20 / not in use IP 30
norm	according to DIN EN 50085
permits	according to VDE / TÜV
loading	including inspection stamp Ø 13 / 130 mm: 2 / 3 kN

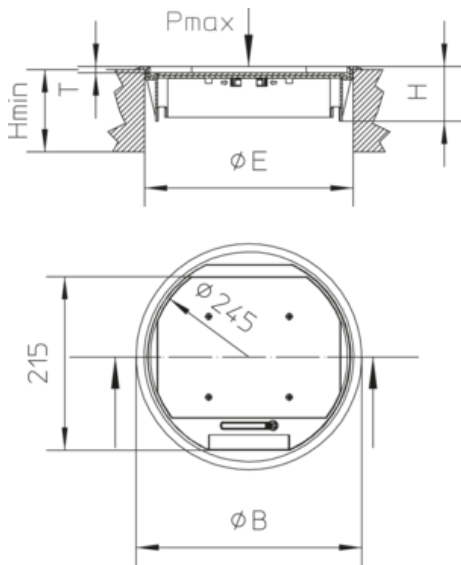
### Polyamide

Product	H	H <sub>min</sub>	B	E	T	P <sub>max</sub>	color	IP <sub>n</sub>	IP <sub>g</sub>	G
UEKD2-R-G	65 mm	74 mm	280 mm	260 mm	8 mm	2 kN	RAL 7011 (iron grey)	IP 30	IP 20	1,3 kg
incl.: 1x UDKS-R 4 universal claw set for hinged cover, round										
UEKD2-R-S	65 mm	74 mm	280 mm	260 mm	8 mm	2 kN	RAL 9011 (graphite black)	IP 30	IP 20	1,3 kg
incl.: 1x UDKS-R 4 universal claw set for hinged cover, round										



**H:** height  
**H<sub>min</sub>:** Minimum installation height  
**B:** width  
**E:** fitting dimension  
**T:** depth  
**P<sub>max</sub>:** Maximum load  
**color:**  
**IP<sub>n</sub>:** IP protection level in unused condition  
**IP<sub>g</sub>:** IP protection level in used condition  
**G:** weight

## DETAILS / APPLICATIONS



## OPTIONAL ACCESSORIES

UEKD R, UDKS 40-80, UDKSEB



dry-cleaned

