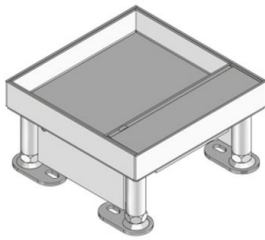


## UEKD1-2 V E

stainless steel hinged cover single-outlet cartridge, double, angular



Square floor installation unit with hem to accommodate two installation devices of 45x45 mm. As a height-adjustable cartridge installation frame with cable outlet cartridge, self-locking opening lever, floor-flush cable outlet and rubber seal. Suitable for rooms with dry-cleaned floor covers. Designed for office traffic loads.

Please mind the technical information in chapter planning.



material	cartridge and frame: 2mm high-grade steel V2A, sub construction: sheet steel galvanized
type of assembly	Assembly on floor box UBDHB / rough concrete ceiling
application area	dry floor cleaning
protection class	in use IP 20 / not in use IP 30
norm	according to DIN EN 50085
permits	according to VDE / TÜV
loading	including inspection stamp Ø 13 / 130 mm: 2 / 3 kN

### Stainless steel, according to ASTM 304 / BS 304 S 3

Product	H	H <sub>min</sub>	N	B	L	E	T	P <sub>max</sub>	IP <sub>n</sub>	IP <sub>g</sub>	G
UEKD1-2 15-V E	19 mm	80 mm	45 mm	160 mm	160 mm	164 x 164 mm	12 mm	2 kN	IP 30	IP 20	1,12 kg
incl.:											
1x UGD1-2-V 2				rubber seal, angular							
UEKD1-2 25-V E	29 mm	90 mm	45 mm	160 mm	160 mm	164 x 164 mm	22 mm	2 kN	IP 30	IP 20	1,30 kg
incl.:											
1x UGD1-2-V 2				rubber seal, angular							

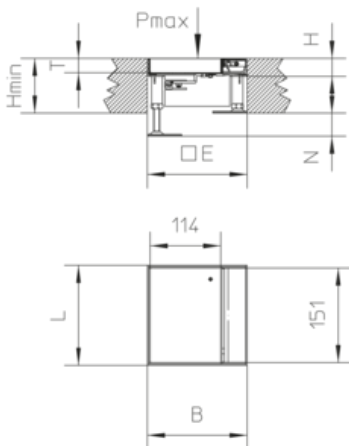
### Brass



Product	H	H <sub>min</sub>	N	B	L	E	T	P <sub>max</sub>	IP <sub>n</sub>	IP <sub>g</sub>	G
UEKD1-2 25-V MS	29 mm	90 mm	45 mm	160 mm	160 mm	164 x 164 mm	22 mm	2 kN	IP 30	IP 20	1,30 kg
incl.:											
1x UGD1-2-V 2		rubber seal, angular									

**H:** height  
**H<sub>min</sub>:** Minimum installation height  
**N:** levelling range  
**B:** width  
**L:** length  
**E:** fitting dimension  
**T:** depth  
**P<sub>max</sub>:** Maximum load  
**IP<sub>n</sub>:** IP protection level in unused condition  
**IP<sub>g</sub>:** IP protection level in used condition  
**G:** weight

## DETAILS / APPLICATIONS



## OPTIONAL ACCESSORIES

UGEAV1-2, UGR1-4



dry-cleaned

